



DATALEC
PRECISION INSTALLATIONS

MEP, Critical Infrastructure & Life Safety Systems

About Datalec

Datalec Precision Installations delivers global data centre solutions, specialising in M&E and connectivity design, bespoke manufacturing, modular solutions, installation and data centre services. With unmatched expertise, we offer consultancy, technical cleaning, electronic security, remote hands and migrations. By delivering advanced, future-ready data centres, we empower clients to embrace and lead the AI revolution through innovation and digital transformation.

Known for our quality, flexibility and reliability Datalec constantly seeks how to better meet and exceed client expectations.

The company holds various industry certifications and accreditations. Through careful recruitment and rigorous training Datalec's critical industry qualifications and partner programs are well maintained.



Proven delivery of high standard projects

Originally established with a strong focus on electrical, mechanical, public health, and construction works associated with data hall fit-outs, DPI remains fully committed to this core expertise. Over time, the business has strategically expanded its in-house capabilities to meet evolving client needs, ensuring we can provide comprehensive, end-to-end support across every stage of their projects.

Service offering includes:

Critical Infrastructure

- Connectivity
- Mechanical & Electrical
- Electronic Security
- CSA
- High-density & AI Solutions
- Lifecycle
- Modular Infrastructure
- New/Refurb

Bespoke Manufacturing

- Modular & AI Solutions
- Caging Solutions
- Aisle Containment
- Hyperion Structural Ceiling
- Powder Coating
- Accessories
- Research & Development

Consultancy Services

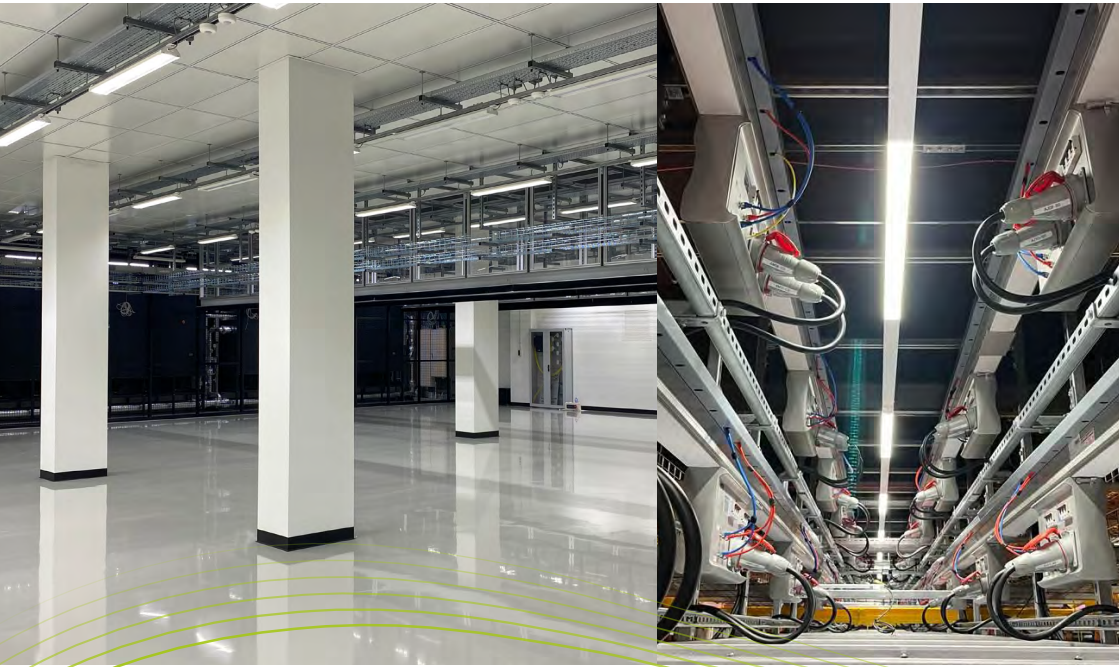
- Project Management
- Client-side Technical PM
- Technical Contract Administration
- Construction Management and Monitoring
- Strategic Project Advisory
- Risk Management & Mitigation

Technology & Data Centre Services

- #### Data Centre Services
- Critical Infrastructure Maintenance
 - Facilities Management
 - Technical Cleaning
 - Soft Services
- #### Technology Services
- Active Hardware Engineering
 - Technical Resource
 - Remote Hands Service
 - Migrations
 - Data Destruction

Our commitment to quality and innovation

Self-delivery is Datalec's commitment to providing the quality, consistency, and common exacting standards in workmanship that clients deserve and demand.



Architectural / Construction

- Raised access, resin and anti-static flooring.
- Drywall and whitewall installations.
- Bespoke and suspended ceilings including bracketing installations.
- Installation of doors, both fire rated and security.
- Joinery and carpentry.
- Structural supports including spreader beam installation for heavyweight cabinets.
- Decorations.
- Fire stopping.
- Technical and critical environment cleans.
- Physical security.
- Modular Infrastructure.

Electrical

- Primary & secondary containment installations.
- Bespoke bracketry arrangements.
- Structured cabling and fibre networks.
- Sub-mains power supplies.
- Panel installations.
- Busbar and busway installations.
- Lighting and small power installations.
- Fully tested and NICEIC certified.
- Electronic Security Solutions.

Mechanical

- Fire rated and general supply/extract ventilation systems.
- Mild steel and stainless-steel pipework installations.
- Direct expansion installations.
- Water treatment.
- Commissioning of mechanical systems.
- Heat load testing to prove cooling systems.
- Technical loops and fluid networks.

Public Health

- Sump pump installations to internal and external environments.
- All elements of drainage.
- Condensate systems.
- CWS and HWS.



We are always looking for great people to join our growing team.

If you are interested in working at Datalec please send your CV to:

recruitment@datalecltd.com

HEALTH & SAFETY

Datalec takes pride in its H&S reputation. The company invests heavily in H&S and training for its management and operatives and fully embraces best practice to ensure it remains ahead of the curve in its commitment to its employees, clients and any third parties. This is supported by ongoing internal H&S campaigns, adaptive systems and its SHE approaches in an ever-changing World and climate.

The company strives for the best H&S culture in the industry, but recognises this can only be achieved with a consistent message, approach and a genuine appetite to continually evolve its H&S culture.



Datalec's health & safety culture is strong, dynamic and ever evolving. Where best practice and innovation is used to achieve only the highest standards

OUR ENVIRONMENTAL RESPONSIBILITY

Datalec recognises the significant impact that its services can have on the environment. Rather than only achieving legal compliance, Datalec actively tries to protect the environment by promoting sustainable use of natural resources, preventing environmental pollution, participates vigorously in waste minimisation and implements best practice to reduce impacts.

Datalec is continuously looking at ways across its business to improve its environmental stance and believe this will become more critical as the world focuses on the wider issues.



Environmental management and sustainability are an integral part of our philosophy and delivery process. We continuously drive for improvement.



DATALEC
PRECISION INSTALLATIONS



+65 97104075



datalecapac.com



info@datalecapac.com



Datalec Precision Installations Pte. Ltd

18 Robinson Road #02-03
Singapore
(048547)