



DATALEC
PRECISION INSTALLATIONS

Migration and Technical Services

datalecltd.com

ABOUT DATALEC


Datalec Precision Installations have been instrumental in delivering support services in the data centre and technology industry since 2012. Datalec's reputation has been built on offering its client base an agile, reliable, and precise service.

With an established reputation built on quality, flexibility and reliability Datalec constantly seeks how to better meet and exceed client expectations.

The company holds various industry certifications and accreditations. Through careful recruitment and rigorous training Datalec's critical industry qualifications and partner programs are well maintained.



**WE ARE
HIRING!**



**We are always looking
for great people to join
our growing team.**

If you are interested in working at Datalec please send your CV to: hr@datalecltd.com

Migration Services

Datalec has a wealth of experience across all elements of Migrations with particular focus working in the Technology and Finance Sectors.

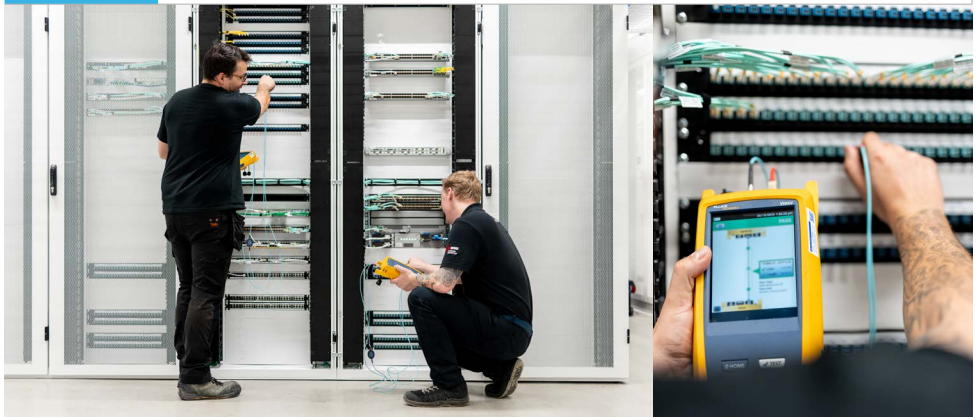
From data centre fit-outs to technical services, we will provide the professional services that our clients require on time and on budget.

Some Examples Of Our Service

- Project Management – dedicated Project Management and Co-ordination.
- Client Workshops – working with you to define the scope of your project.
- Scheduling – helping you in the planning/staging of your migration needs to minimise risk.
- Auditing – carrying out a full audit prior to any migration activity. This can be scaled to your requirements.
- Space Planning – providing support for space allocation in your target destinations.
- Server Re-stacks – efficiency is key with your data centre space and should you need to organise your existing hardware in an optimal manner, we will facilitate and support you through the process.
- Logistics – we understand the value of data and hardware and we will always ensure your hardware is transported according to industry standards and expectations.
- Hardware Support – we can provide a 24/7/365 Intelligent Hands Service where required.
- Preparation – patching schedule and documentation.
- Command and Control – from the point of go live for any change, we provide on-site command and control to oversee your migration from start to finish with 24 hour round the clock support.
- Insurance – we can offer insurance cover to ensure your hardware has wrap around care.
- Hardware Goldstock – should you have a hardware failure we can provide an SLA driven service to support this to provide an extra level of comfort.
- On site smart hands service – HP, Dell EMC, IBM, etc. we can provide the right expertise should you require.
- Issue Log tracking for the client.
- Organisation Checkpoints – we will keep all stakeholders updated on the progress of the migration with regular updates.
- Open Bridge – should you wish an update on the progress of your migration or ask a question we will be there throughout the duration of the change window.
- Post Migration debrief.

Auditing Services

Asset Audit	<p>In some fast paced and critical environments, it is not unheard of to lose track of your asset inventory. Datalec Connectivity can audit your estate and provide you with a comprehensive view of your assets.</p>	<ul style="list-style-type: none">• Host names.• Serial numbers.• Asset Tags.• Rack locations, U heights, & size.• Attached hardware.
Power Audit	<p>Power management is important to get right and manage effectively. Ensure your dual fed devices are correctly connected for resilience as well as highlighting risks to your setup where single fed devices can be found.</p>	<ul style="list-style-type: none">• PDU and power distribution audit.• Power lead management and tidy.• Redundant cable decommissions.
Pre – Migration Audits	<p>Combining many of the above services into one complete package we will ensure you have a full and comprehensive view of your setup with a full patching schedule in preparation for the migration activities. We will highlight any identified risks and advise on best practice solutions. We will also provide a patching audit in readiness for your migration for full visibility of your connectivity.</p>	<ul style="list-style-type: none">• Asset Audit.• Power Audit.• Patching Audit.• Patching Schedule.• Target DC or location survey.• Work with the client on space allocation.



Auditing Services

Asset Audit Information Summary

Audit Element	Explanation	Included	Audit Element	Explanation	Included
Rack Location Ref	Rack reference number	✓	Asset Number	Client Asset number of device	✓
Rack Dimensions	Rack dimensions and mounting post depths	✓	Qty of Network Connex	Qty and type of network connections	✓
Device Name/Description	Name as stated on equipment as well as Serial Numbers	✓	Related/Linked Equipment	Linked equipment e.g. DAS, SAN trays	✓
Equipment Mfg & Make	Make and model (inc Generation)	✓	Power Connex Qty	Qty of live power connections	✓
Equipment Type	Equipment category	✓	Power Connex Type	Type of power connection	✓
U Size	Equipment U Size	✓	Proprietary Connex Qty	Qty of proprietary cable connections	✓
Rack Presentation	Mounting location (Front/Rear/Side etc)	✓	PDU Socket ID's	PDU/ATS socket ref numbers	✓
Mounting Status	Rails/Shelf/Brackets	✓	Apparent Status	Visible status of device	✓
Upper U Position	Upper U position	✓	Device Health	Recording of error lights/etc	✓

Rack Elevation Post Audit

All audits will be supplied to you providing a detailed view of your assets and cab layouts in the form of pre and post migration elevations.

These elevations can be tailored to your business's formats and naming standards.

Rack 02/04 (Network)		
46	Fibre Panel to 0101 & 0102	46
45	Xconnects	45
44	Xconnects	44
43	Cable Management	43
42	GAMMA Circuit (Fibre Tray)	42
41	GAMMA Circuit	41
40	GAMMA - Cisco 897VA	40
39	GAMMA - Cisco 4221	39
38	Cisco 2900 (SIP Router)	38
37		37
36	ADVA FSP150CC	36
35	ADVA FSP150CC	35
34	Juniper SRX340	34
33	ADVA FSP150CC (Juniper 1)	33
32	Juniper SRX340	32
31	ADVA FSP150CC (Juniper 2)	31
30	Palo Alto 3020	30
29	Palo Alto 3020	29
28	Blanking Plate	28
27	Blanking Plate	27
26	Cable Management	26
25	Juniper SRX340	25
24	Bloomberg Appliance	24
23	Riverbed Steelhead	23
22		22
21	Cisco ASA5508	21
20	Cisco 890	20
19	Cisco 4221	19
18	ADVA - SIP	18
17	CISCO 4321	17
16	ADVA FSP150CC	16
15		15
14	Cisco 4421	14
13	Cisco MDS9148	13
12	Cisco UCS C220M4	12
11		11
10	HP Storageworks MSL4048	10
9		9
8		8
7	Blanking Plate	7
6	Blanking Plate	6
5	Blanking Plate	5
4	Blanking Plate	4
3	Blanking Plate	3
2	Blanking Plate	2
1	Blanking Plate	1

Patching Services

Patching Audits

Full audits of existing patching from source to destination whether with one cab or through the structured cabling, we will provide you with a full view of your connectivity no matter the size of your estate.

- **Fibre and copper audit.**
- **Labelling services.**
- **Decommissioning redundant cabling.**
- **Intercab/underfloor/overhead audit.**
- **Cable management and tidy.**

Cable Audit Information Summary

Audit Element	Explanation	Included	Audit Element	Explanation	Included
Source Rack Location Ref	Rack reference number	✓	Cable Type	Cable and terminator type	✓
Source Device Name	Name as stated on equipment	✓	Cable Label Details	Details of existing cable label	✓
Source Device U Position	Device U position	✓	Destination Rack Location Ref	Rack reference number	✓
Source Device Interface Card	Device interface card	✓	Destination Device Name	Name as stated on equipment	✓
Source Device Interface Port	Device interface port	✓	Destination Device U Position	Device U position	✓
Cable Routing Information	Routing info (longline, direct etc)	✓	Destination Device Interface Card	Device interface card	✓
Patch Panel Information	Patch Panel name and port	✓	Destination Device Interface Port	Device interface port	✓
Cable Colour	Cable or cable clip colour	✓	Comments	Any other comments	✓

Technicians

Datalec hold system accreditations with all the major manufacturers. We also hold the preferred approved installer status to install Corning, Commscope and many more. Our migration technicians hold CNCI accreditations as well as holding Server +, Network + status and accreditations with widely used hardware manufacturers such as Dell EMC, HP, and Cisco.





Command and Control

When you choose Datalec for your server migration activity you not only get certified technicians with the right skill set, you also get a wealth of comprehensive migration knowledge in the form of an assigned project manager who will provide you with the guidance for a painless end-to-end solution.

Our Project Management team will be on hand through the planning phase of your migration as well as being on the ground at the source and destination sites of your migration. They will be there to provide you with continuous updates on the progress of the migration as well as tracking the schedule of events from start to finish in addition to supporting you in reporting back into your business.

We will build your SOE with your business to ensure all key activities are captured and tracked as well as tracking any faults or issues throughout the life-cycle of your change.

**to provide
you with the
guidance for
a painless
end-to-end
solution**

Logistics

At Datalec we understand that the logistics of your equipment are just as important as the pre-checks of your operating systems. The specialist handling and security of your hardware is done in a careful and controlled manner should you require a multi-site migration.

- Secure IT transport and storage.
- Confidential, non-stop and to tight deadlines.
- Complete Data Centre Decommissioning services.
- Technology Migration.
- Specialist final placement.
- Timely arrival at site to liaise with Lead Engineer/Project Manager.
- Tail lift vehicle, air suspended box with Portorage.
- Create an inventory list, recording host name or serial number and model (attach to container externally) in a dispatch envelope.
- Once the inventory is checked and approved, the project manager/lead engineer will attach an anti-tamper seal to the door of the container (recording the individual seal number). A copy of this inventory is dispatched in advance to the delivery site.
- Load each container and secure within the vehicle and once complete, placing another seal at the rear of the vehicle when the tail lift is closed.
- Dedicated transport non-stop to the delivery site, unload, verify seal, unpack and hand over to Lead Engineer.
- Ensure the site is left clean with all packaging removed.

OUR COMMITMENT TO QUALITY AND INNOVATION

Self-delivery is Datalec's commitment to providing the quality, consistency, and common exacting standards in workmanship that clients deserve and demand.

Service Offering Includes:

Critical Infrastructure

- MEP Design and Construction.
- White and Grey Space Fit-Out.
- Technical Fit-Out.
- Connectivity.
- Electronic Security Solutions.

Data Destruction Services

IN PARTNERSHIP WITH



n2s is one of the industry leaders in technology lifecycle management with specialist expertise in data centre decommissioning projects. Data security and sustainability are at the core of our methodology. We have played a pro-active role in the project management of the decommissioning of some of the UK's most secure data centres.

Our partnership with Datalec, blends our joint expertise and agility and starts with a proactive, planning and design stage. Building you the most secure and sustainable outcome for your

decommissioning requirements whilst taking care of legacy equipment in the most economic and environmentally positive way.

With data centres being one of the largest emitters of greenhouse gases (GHG) whilst in operation, n2s and Datalec can help minimise their environmental impact on decommissioning by ensuring equipment suitable for reuse is given a second life and recovering all materials zero to landfill. An Environmental Impact Report is provided detailing the carbon and water avoidance of managing your equipment sustainably.

n2s Data Centre Decommissioning Services

Supporting the planning & removal of legacy/redundant data centre equipment, including, servers, switches, PSU's, racks and cabling.

On-site services and logistics are provided by our own team of Security Cleared Field Engineers in n2s secure tracked vehicles and include:

- Mobile and off-site Data Destruction.
- Deracking of servers.
- Removal of empty racks and cabling.
- Data Sanitisation – Blancco certified.
- Remarketing (and value return).
- WEEE recycling of BER assets.
- Zero to landfill.

Data Hall Manufacturing

- Aisle Containment.
- Caging Solutions.
- On-Site Powder Coating Facility.

Managed Services

- Intelligent Hands.
- Migrations.
- Data Destruction.
- Technical and Critical Environment Cleaning.
- Customer Portal.

Consultancy Services

- Project Management.
- Programme/Portfolio Management.



DATALEC
PRECISION INSTALLATIONS

☎ **+44 (0) 800 689 1318**

🌐 **datalecltd.com**

✉ **info@datalecltd.com**

📍 **Datalec Precision Installations**

Milton House
Buntingford Business Park
Baldock Road
Buntingford
Hertfordshire
SG9 9ER