



DATALEC
PRECISION INSTALLATIONS

**DELIVERING
EXCELLENCE
IN IRELAND**

datalecltd.com

ABOUT DATALEC

Datalec Precision Installations have been instrumental in delivering world-class data centre, design, build, installation and managed services since 2012. Datalec's reputation has been built on offering its customer base an agile, reliable and precise service.

DPI Values:

D Dedication

P Precision

I Integrity

Known for its quality, flexibility and reliability Datalec constantly seeks how to better meet and exceed customer expectations.

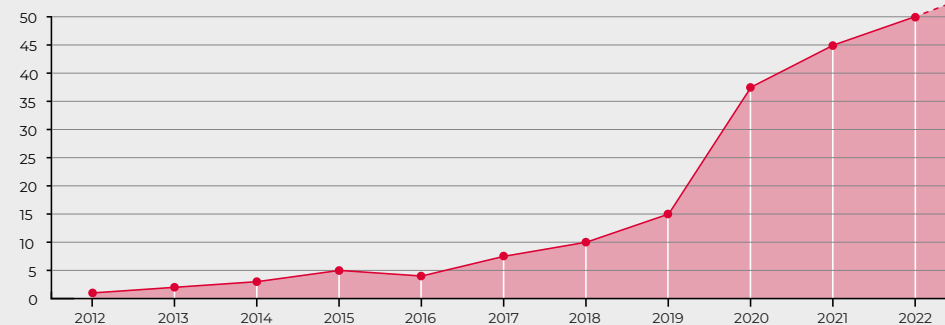
The company holds various industry certifications and accreditations. Through careful recruitment and rigorous training Datalec's critical industry qualifications and partner programs are well maintained.



KEY FACTS

- Datalec Power Installations is a wholly owned private limited company, formed in 2012.
- Trading as Datalec Precision Installations Ltd (DPI) it offers a one call, one team service solution.
- Datalec undertakes design, supply installation and commissioning of critical infrastructure in and around the whitespace primarily for the data centre sector.
- Expanding service offerings include architectural, construction works
- plus data centre design and project management consultancy services.
- Datalec has experienced significant organic growth. 90% of any business developed is generated through repeat business and referrals.
- A substantial amount of business has been executed in Europe necessitating a multinational corporate structure.
- Investment back into the business is key to continued support and delivery for our customers.

TURNOVER (£Million)



HEALTH & SAFETY



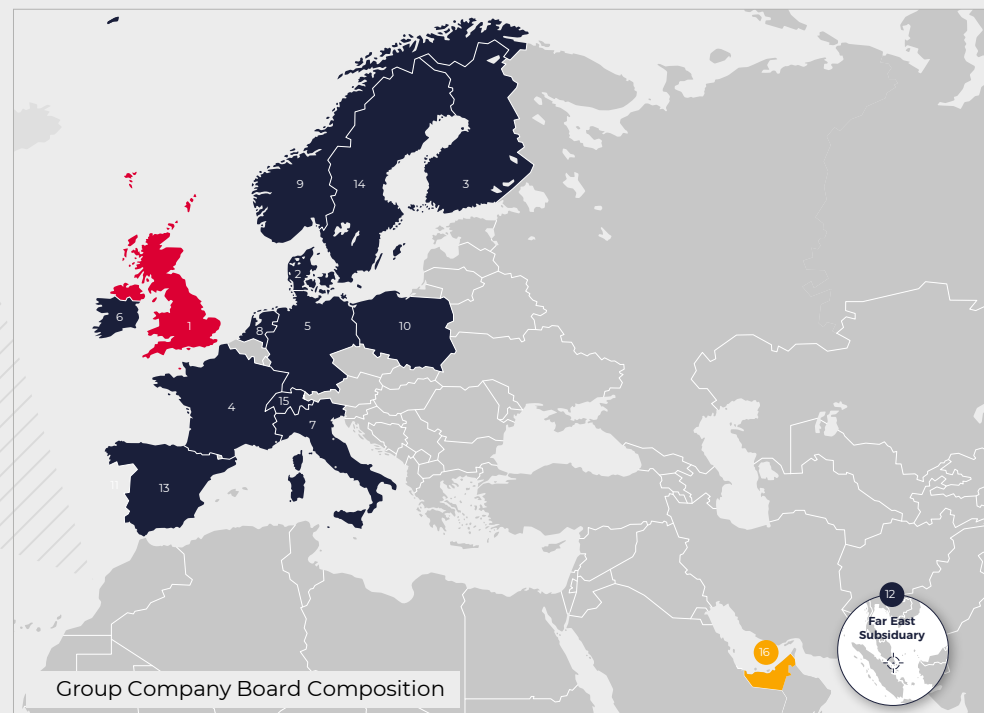
Datalec takes pride in its H&S reputation. The company invests heavily in H&S and training for its management and operatives and fully embraces best practice to ensure it remains ahead of the curve in its commitment to its employees, customers and any third parties. This is supported by ongoing internal H&S campaigns, adaptive systems and its SHE approaches in an ever-changing World and climate.

The company strives for the best H&S culture in the industry, but recognises this can only be achieved with a consistent message, approach and a genuine appetite to continually evolve its H&S culture.

DATALEC'S HEALTH & SAFETY CULTURE IS STRONG, DYNAMIC EVER EVOLVING. WHERE BEST PRACTICE AND INNOVATION IS USED TO ACHIEVE ONLY THE HIGHEST STANDARDS.

GLOBAL REACH

DPI is a UK based company. Headquarters in Hertfordshire. Offices in Ireland, Holland and Germany, with further satellite offices elsewhere.



Parent Company:
1: United Kingdom



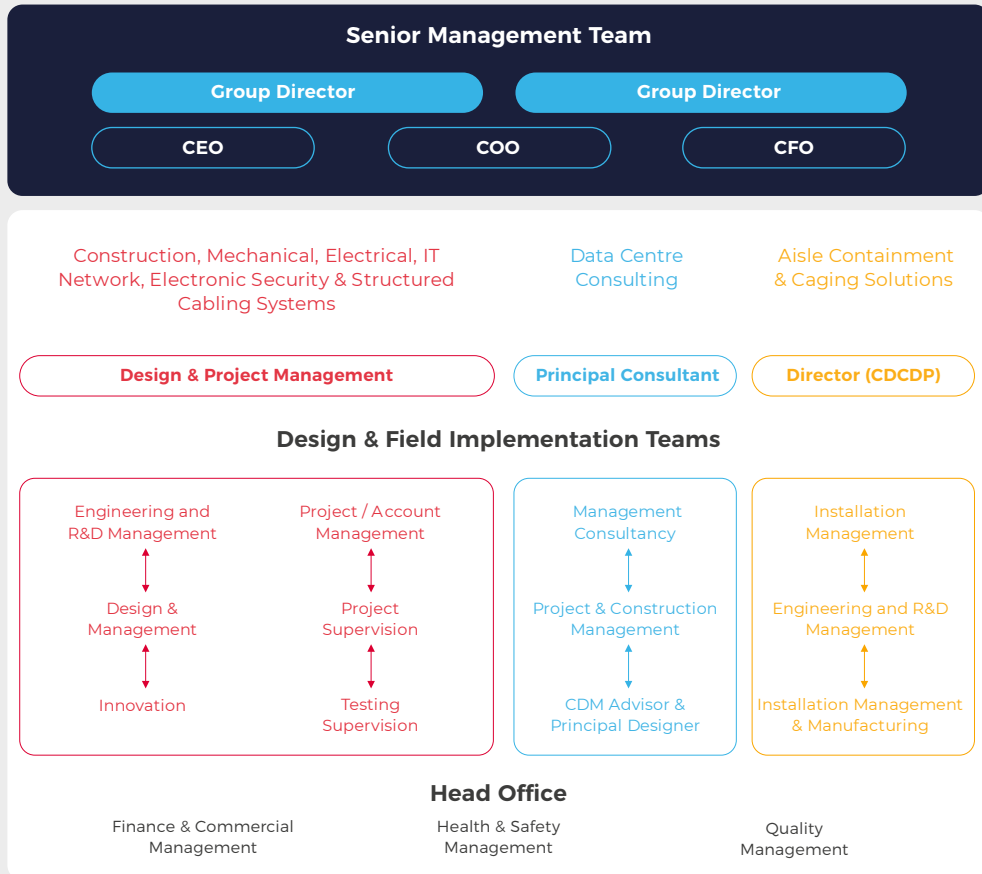
Planned Expansion - Stage 1:
16: UAE



Subsidiary:
2: Denmark
3: Finland
4: France
5: Germany
6: Ireland
7: Italy
8: Netherlands

9: Norway
10: Poland
11: Portugal
12: Singapore
13: Spain
14: Sweden
15: Switzerland

ORGANISATIONAL STRUCTURE



PROJECT & DELIVERY APPROACH

AGILE | EFFICIENT | PRECISE



DATALEC'S 36,000 SQ. FT AISLE CONTAINMENT & CAGING MANUFACTURING, PRE-TERMINATION, DISTRIBUTION & TRAINING HUB

- Demo Suite Standard Compliance aligned to EU
- Hot & Cold Aisle Containment Systems / Security Caging
- Lab Services for Fibre Copper Pre-termination
- Off-site prefabrication capability
- Prefabrication Cable Containment Systems
- Pre-staging Network & IP Security Equipment
- Space Allocation for Modular Data Centre

OTHER BENEFITS:

- Efficient Installation Practices
- Improved Carbon Footprint
- Modularisation capability
- Improved Project Timelines
- Reduced Site Resource Levels
- Quality Control
- Waste Management Reduction

DPI CAPABILITIES AND SPECTRUM

As part of our capability we can offer the following services: -



DESIGN

- Design Development & Co-ordination including BIM (Building Information Modelling)
- Design Reviews & Design Management
- In-house MEP Design & Verification



LANDLORD & WHITESPACE CONSTRUCTION

- Architectural / construction works including raised flooring, suspended ceilings, whitewall installations and final finishes
- BMS / PMS / EMS / IT Network & Structured Cabling
- Design Development MEP Fit Out & Infrastructure
- Hot & Cold Aisle Containment Systems / Security Caging
- Life Safety systems (management of certified specialists)



COMMISSIONING

- Commissionability Study & Appraisal
- Quality Control & Assurance Measures
- Regulatory & Statutory Approvals
- Strategic Testing & Commissioning Management



CONNECTIVITY

- Implementation of bespoke designs according to customer needs
- Solutions to optimise client requirements to future proof business demands
- Dedicated pre-term facility, ensuring quality and deliverables against project timescales



MANAGEMENT CONSULTANCY

- Client-side Technical Project Management
- Construction Management & Monitoring
- Procurement & Supply Chain Management
- Risk Management & Mitigation



MANAGED SERVICES

- Migration Services
- Project Management
- **Technical Cleaning**

Self delivery is Datalec's commitment to providing quality, consistency and common exacting standards in workmanship that customers deserve and demand.

CONSTANTLY IN THE PURSUIT OF PERFECTION

OUR ENVIRONMENTAL RESPONSIBILITY

Datalec recognises the significant impact that its services can have on the environment. Rather than only achieving legal compliance, Datalec actively tries to protect the environment by promoting sustainable use of natural resources, preventing environmental pollution, participates vigorously in waste minimisation and implements best practice to reduce impacts.

Datalec is continuously looking at ways across its business to improve its environmental stance and believe this will become more critical as the world focuses on the wider issues.

ENVIRONMENTAL MANAGEMENT AND SUSTAINABILITY ARE AN INTEGRAL PART OF OUR PHILOSOPHY AND DELIVERY PROCESS. WE CONTINUOUSLY DRIVE FOR IMPROVEMENT.

DATALEC GROUP SERVICES

SERVICE OFFERING INCLUDES:

- Aisle Containment and Caging Solutions
- Building Information Modelling (BIM)
- Commissioning Services
- Connectivity
- Data Centre Consulting, Construction and Project Management
- MEP Design and Construction
- Project Management
- Systems Implementation
- Technical Cleaning

Datalec Precision Installations (DPI) delivers excellence in international data centre construction and managed services. Partnering with our clients to provide seamless, integrated, unified end-to-end results with a 'One Call, One Team' service. Forever in 'pursuit of perfection', with rigorous project management and supervision ensures solutions are implemented the first time, every time, while mitigating risk and managing cost for clients. Datalec is focused on delivering a proactive and personal service that provides agility, flexibility and adaptability for substantial data centre construction, inside and outside the whitespace.



COMMSCOPE

CORNING





Tel: +353 (0) 1 525 2619

www.datalecltd.com

info@datalecltd.com

Datalec Precision Installations
Unit 32, Premier Business Park
Ballycoolin Road, Dublin 11
Ireland
D11 VW83